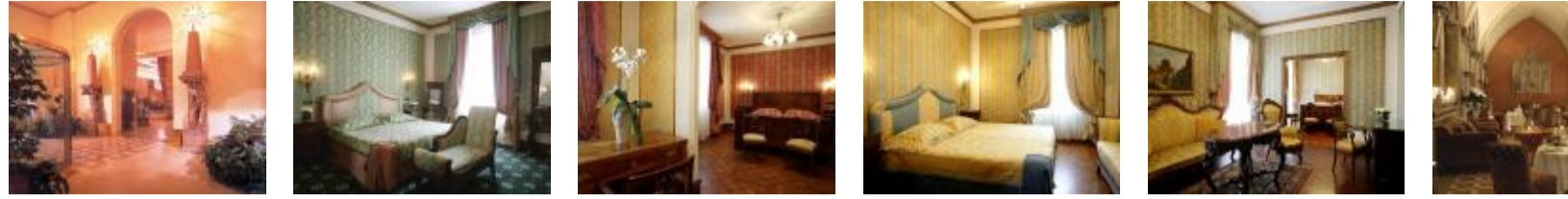


## Due Torri Hotel Baglioni



**Address:** Piazza Sant'Anastasia 4 37121 Verona

Due Torri Hotel Baglioni is situated in the old city center of Verona, next to the church of Sant'Anastasia and only a stone's throw away from Juliet's famous balcony, the Piazza Dante and the Piazza delle Erbe. The hotel occupies a fourteenth century building (Palazzo dell'Aquila), which formerly belonged to the well-known Della Scala family. A lot of work has recently been carried out on the facilities...



### Hotel Overview

Due Torri Hotel Baglioni is situated in the old city center of Verona, next to the church of Sant'Anastasia and only a stone's throw away from Juliet's famous balcony, the Piazza Dante and the Piazza delle Erbe.

The hotel occupies a fourteenth century building (Palazzo dell'Aquila), which formerly belonged to the well-known Della Scala family. A lot of work has recently been carried out on the facilities in order to enhance the rooms and other parts of the hotel.

The Due Torri Hotel Baglioni is elegant as well as refined - and rightly famous throughout the world for the quality of its service and the beauty of its furnishings.

### LOCATION

Due Torri Hotel Baglioni is next to the church of Sant'Anastasia and 300 metres from the legendary balcony of Juliet's house.

### PROPERTY AMENITIES

\* Guests of the Hotel Due Torri Baglioni enjoy a buffet breakfast each morning.

\* Hotel amenities include the Brunello Lounge & Restaurant, an elegant terrace, six meeting rooms for up to 180 persons and providing the latest technologies and business services, a beautiful newly refurbished lobby for banquets and cocktail parties for up to 200 persons, Internet Point, wireless Internet connection and a 24-hour reception.

### ROOM AMENITIES

\* The 90 sound-proof and air-conditioned rooms, including 9 suites, are provided with period furnishings, which allow the guests to enjoy a veritable journey into the past.

\* The furnishings in the rooms are from different time periods, from the French Louis XVI to the German Biedermeier style.

\* All floors offer a large lounge area with precious ceramics, sculptures and works of art.

### CANCELLATION POLICY

Please make a search for your dates to see the defined cancellation policy for that period.